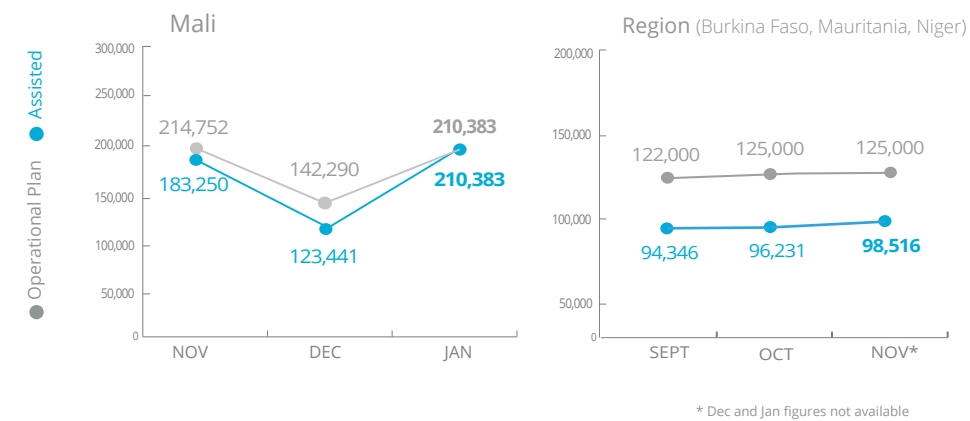


Mali

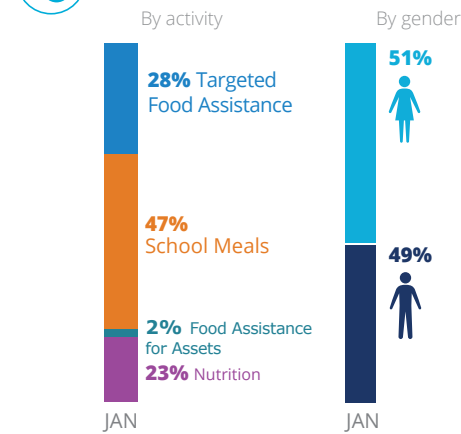


PEOPLE ASSISTED

Mali Transitional Interim Country Strategic Plan (T-ICSP)



OPERATIONAL PROFILE



FUNDING

Mali Transitional Interim Country Strategic Plan (T-ICSP)

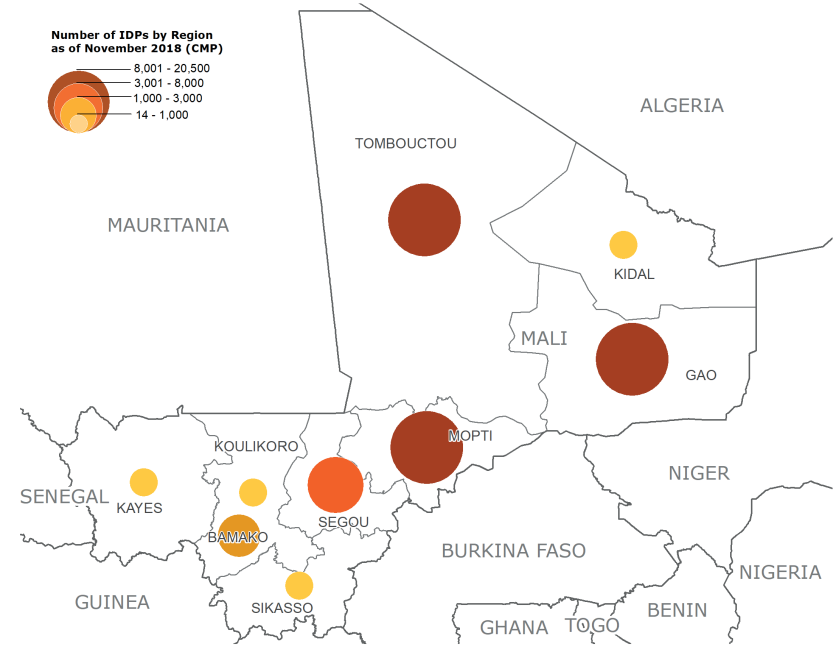
March - August 2019

US\$39m
Net funding requirement

SOURCE: WFP, 28 FEBRUARY 2019

IDP CONCENTRATION

AS OF NOVEMBER 2018

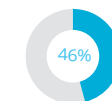


WFP LED & CO-LED CLUSTERS



Food Security and Livelihood Cluster

Number of Partners



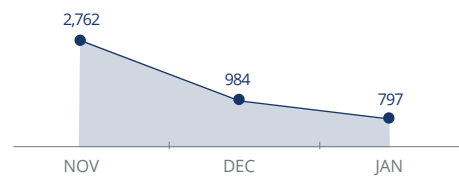
Received: US\$73.5m
Requirements: US\$159.4m

46
(January)

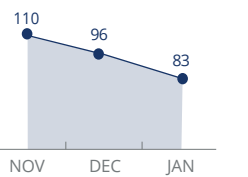


UN Humanitarian Air Service (UNHAS)

Passengers Transported



Organizations Served



Sources: OCHA FTS, WFP, 28 FEBRUARY 2019

WFP LEVEL 2 EMERGENCY

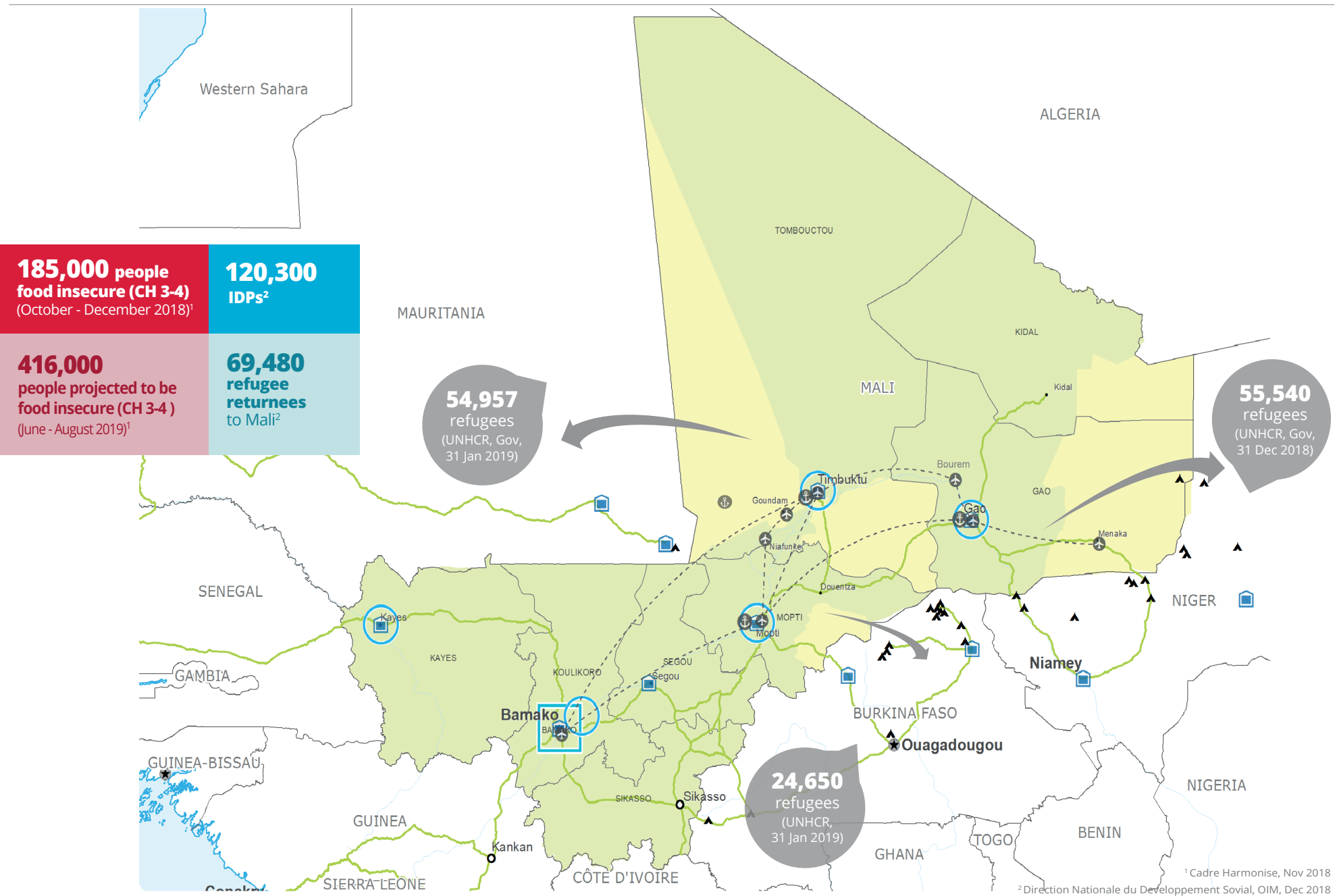
SINCE 12 JANUARY 2012

For more information, see the SITUATION REPORT and COUNTRY BRIEF
[www.wfp.org/countries/mali](http://documents.wfp.org/stellent/groups/public/documents/ep/WFP284303.pdf)



Mali Transitional Interim Country Strategic Plan
<http://documents.wfp.org/stellent/groups/public/documents/ep/WFP284303.pdf>

Produced by the WFP Operations Centre (OPSCEN) jointly with Country Office and Regional Bureau Dakar.
This dashboard is based on best available information at the time of production. Future updates may vary as new information becomes available.



Sources: WFP, UNGIWG, GAUL, GLCSC, OCHA, UNHCR.

The designations employed and the presentation of material in the map(s) do not imply the expression of any opinion on the part of WFP concerning the legal or constitutional status of any country, territory, city or sea, or concerning the delimitation of its frontiers or boundaries.
© World Food Programme 2019.