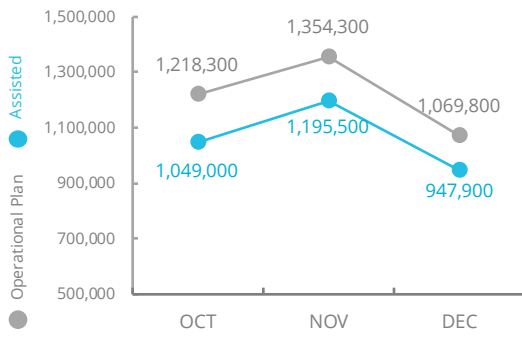
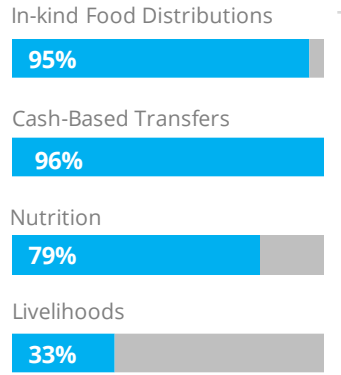


# Nigeria

## PEOPLE ASSISTED BY WFP



## OPERATIONAL PROFILE



SOURCE: WFP, 12 FEB 2021

## COVID-19 Operational Impact

Assisted	Status	WFP Response
522,400	✓	Food Assistance: In-kind provided in the Northeast
346,350	✓	CBT: Ongoing
156,800	✓	Nutrition: Ongoing
46,800	✓	Community-based activities: Ongoing

## FUNDING

Nigeria Country Strategic Plan  
February - July 2021  
Net funding requirements

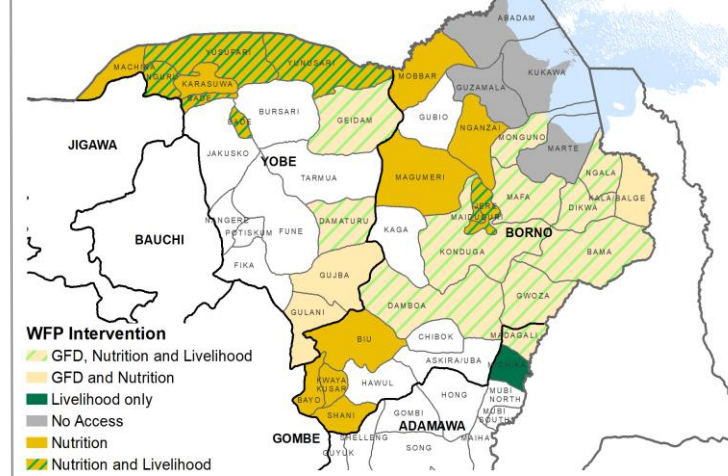
**US\$196m**

LEVEL 3 RESPONSE  
Requirements: USD 254.3m



SOURCE: WFP, 22 JAN 2021

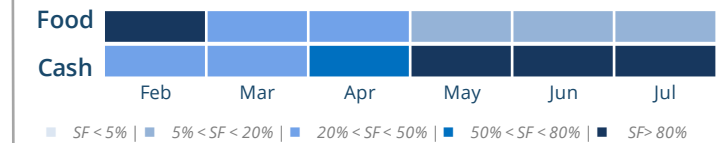
## WFP OPERATIONAL PRESENCE



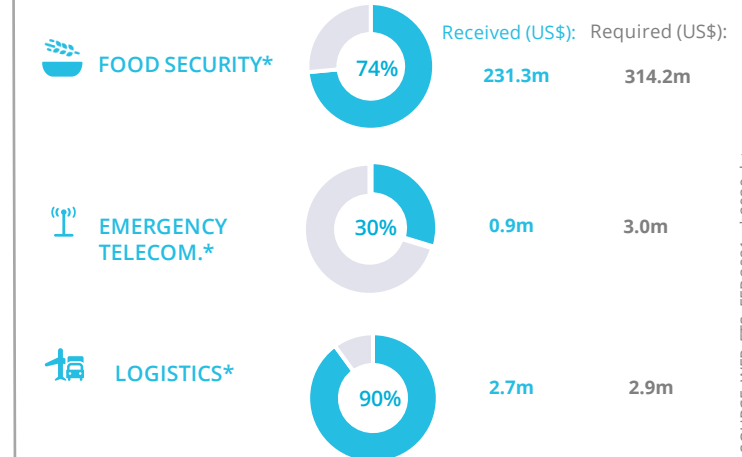
## AVERAGE MONTHLY FUNDING REQUIREMENTS (US\$)



## EXPECTED SHORTFALLS



## WFP-LED AND CO-LED SECTORS

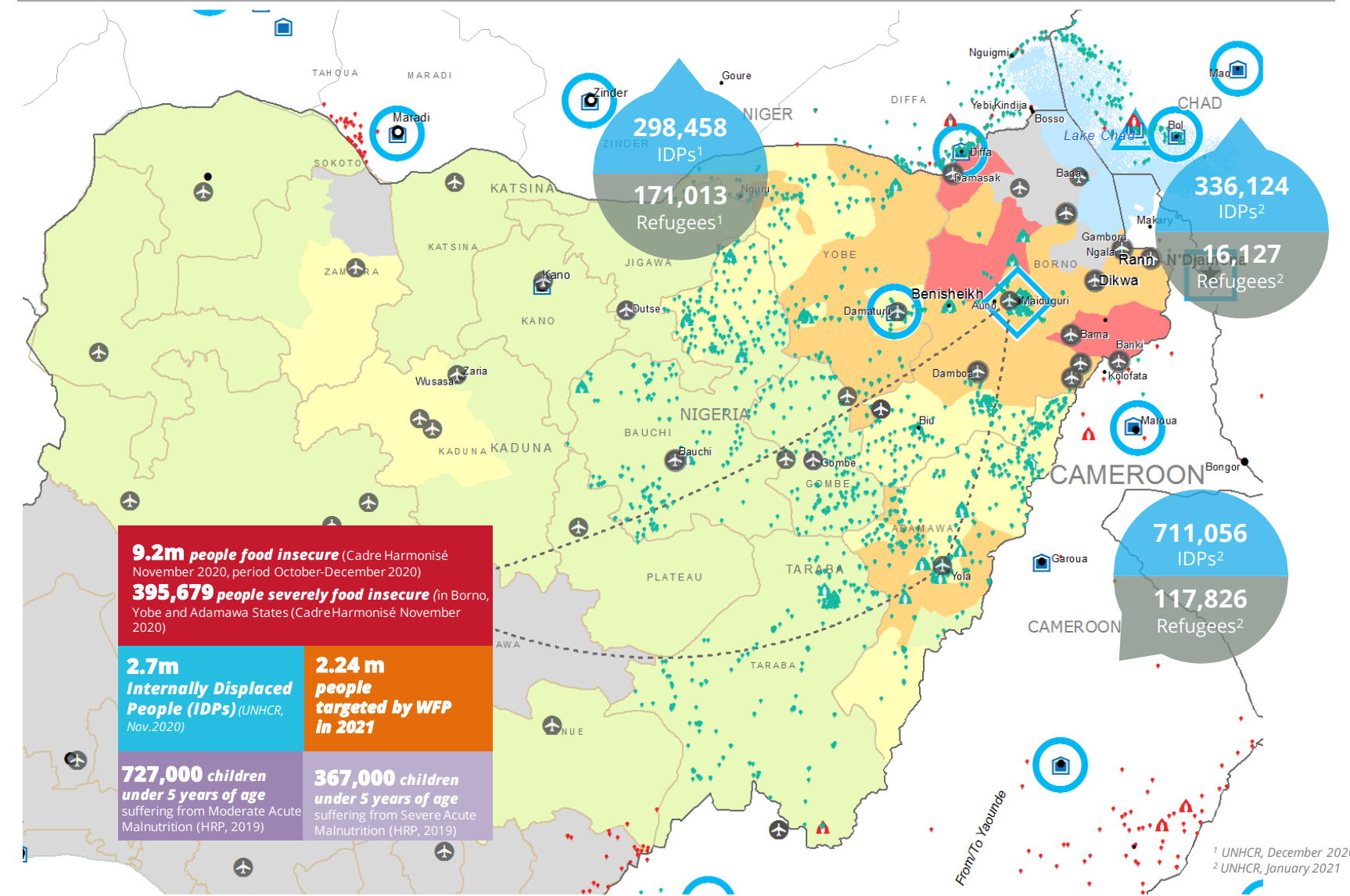


## UN HUMANITARIAN AIR SERVICE (UNHAS)



## WFP LEVEL 3 EMERGENCY SINCE 11 AUGUST 2016

SITUATION REPORT and COUNTRY BRIEF



**9.2m people food insecure** (Cadre Harmonisé November 2020, period October-December 2020)  
**395,679 people severely food insecure** (in Borno, Yobe and Adamawa States (Cadre Harmonisé November 2020))  
**2.7m Internally Displaced People (IDPs)** (UNHCR, Nov.2020)  
**2.24 m people targeted by WFP in 2021**  
**727,000 children under 5 years of age** suffering from Moderate Acute Malnutrition (HRP, 2019)  
**367,000 children under 5 years of age** suffering from Severe Acute Malnutrition (HRP, 2019)

- CH Food Security Classification: No data, Minimal (Phase 1), Stressed (Phase 2), Crisis (Phase 3), Emergency (Phase 4), Famine (Phase 5)
- Country Office, Area Office, Sub Office, Field Office
- UNHAS Connection: Ad-Hoc Fixed-Wing Destination, Ad-Hoc Rotary-Wing Destination, Warehouse
- IDP Camp, IDP Center, IDP Location
- Refugee Camp, Refugee Center, Refugee Location
- National Capital, Major Town, Intermediate Town, Small town
- International Boundary, Province boundary, River

Sources: WFP, UNGIWG, GAUL, GLCSC, OCHA, UNHCR.

The designations employed and the presentation of material in the map(s) do not imply the expression of any opinion on the part of WFP the delimitation of its frontiers or boundaries.  
© World Food Programme 2020.