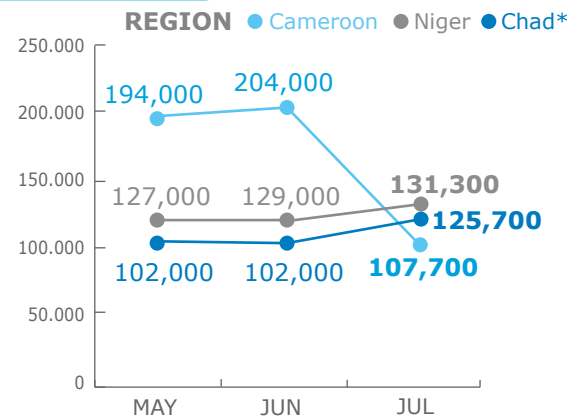
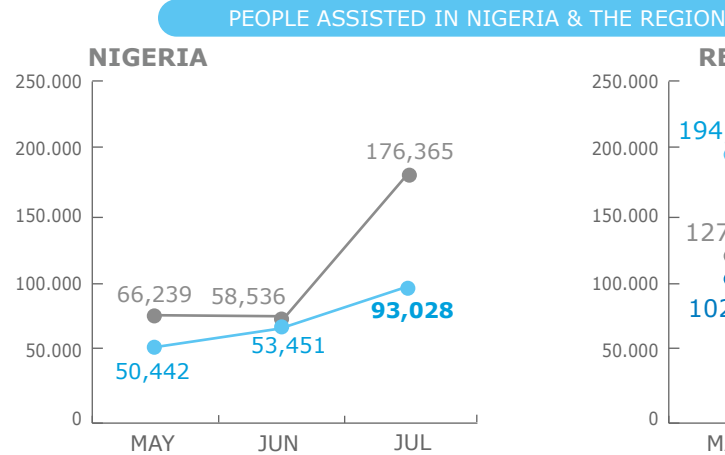


BENEFICIARIES

Reg. Emergency Operation 200777

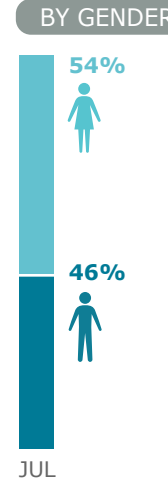
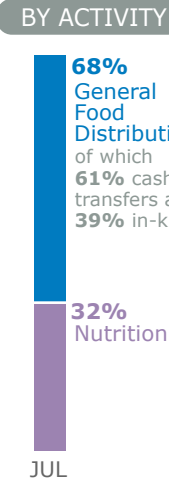


Planned (thousands) Assisted (thousands)



*Chad also assists vulnerable people in the Lake Chad basin under PRRO (Protracted Relief & Recovery Operation) 200713

OPERATIONAL PROFILE



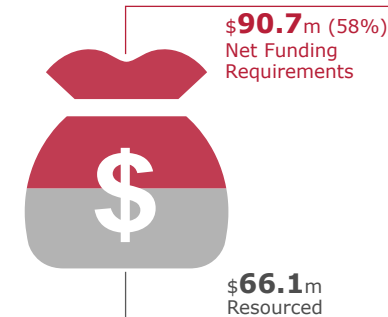
FUNDING

Aug 2016 - Jan 2017

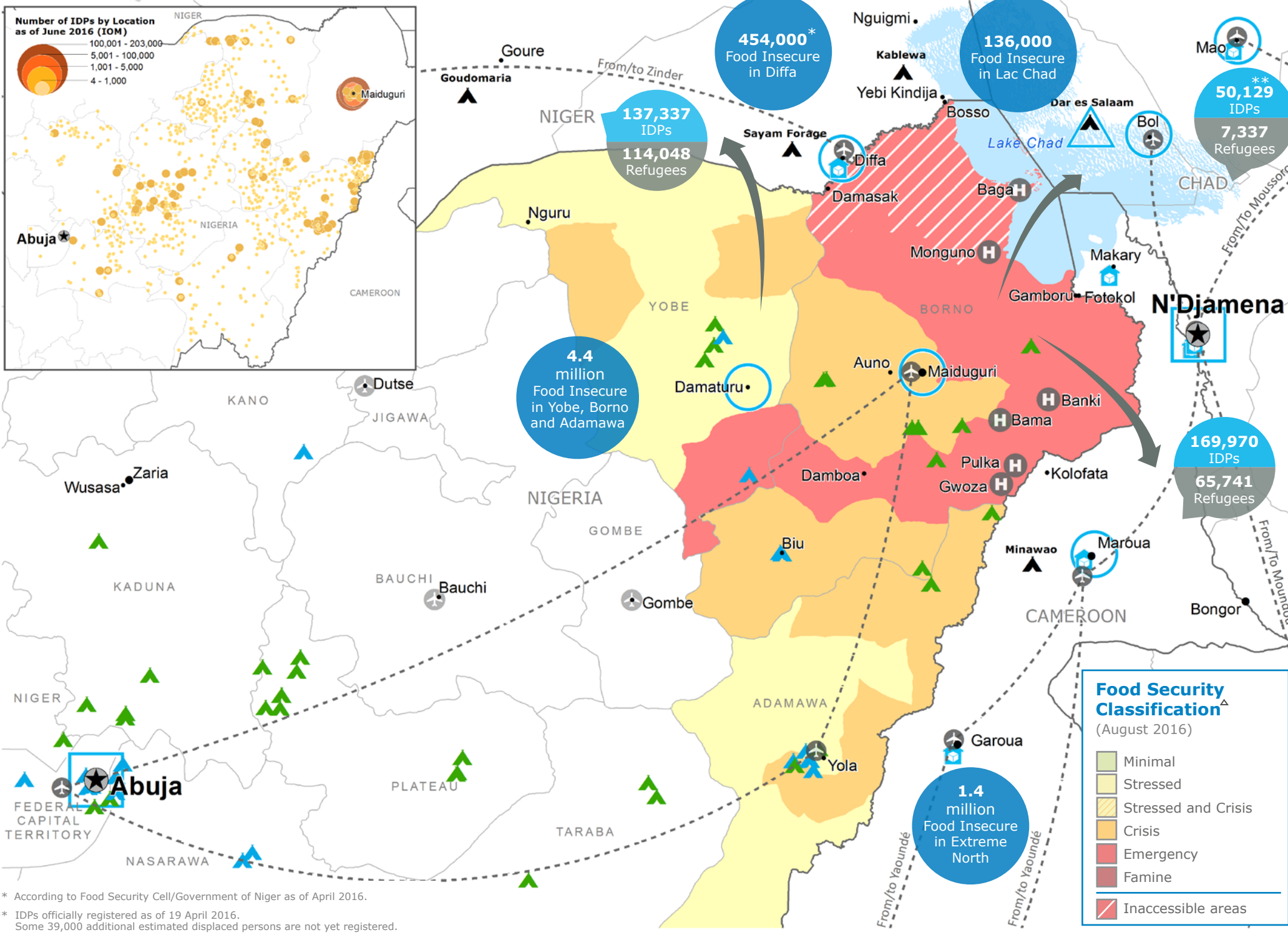
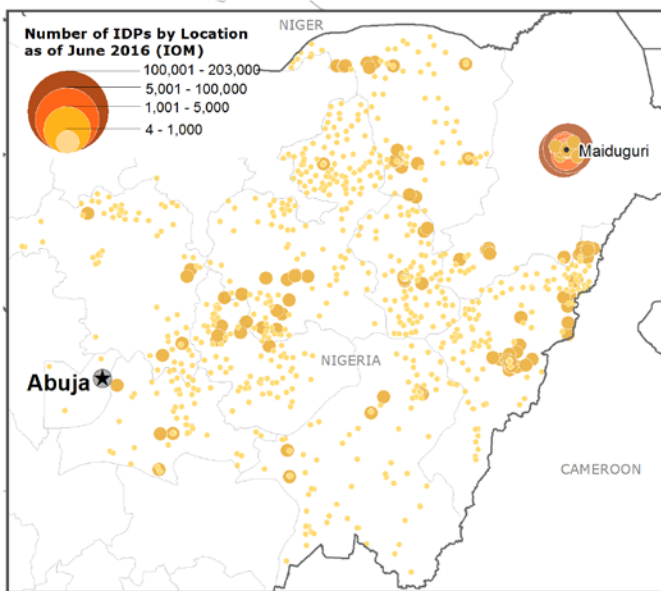
\$156.8m: Six months Requirements

NET FUNDING REQUIREMENTS

Regional Emergency Operation 200777



This Regional EMOP covers requirements for WFP response in Nigeria, as well as related needs in neighboring countries (Cameroon, Chad, Niger)



* According to Food Security Cell/Government of Niger as of April 2016.
 ** IDPs officially registered as of 19 April 2016. Some 39,000 additional estimated displaced persons are not yet registered.

- Country Office
- Sub Office
- Field Office
- UNHAS Connection
- Ad-Hoc Fixed-Wing Destination
- Ad-Hoc Rotary-Wing Destination
- UNHAS Route
- Warehouse
- Refugee Camp
- IDP Camp
- IDP Collective Centre
- National Capital
- Major Town
- Intermediate Town
- Small Town
- International Boundary
- Region Boundary

△ Cadre Harmonise August 2016

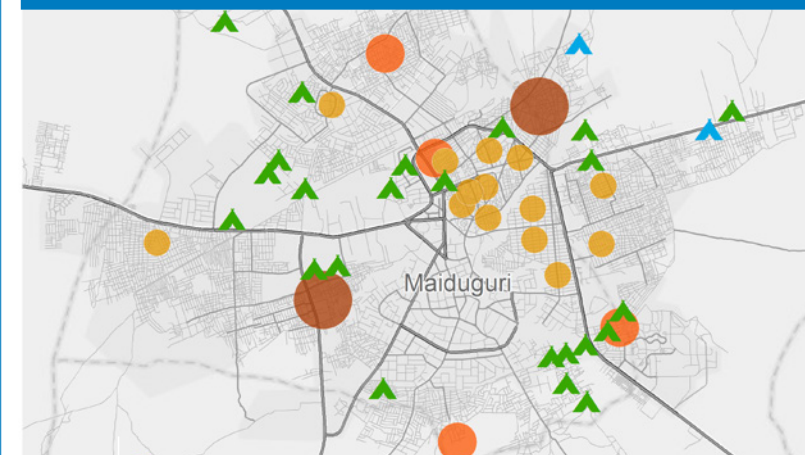
Sources: WFP, UNGIWI, GAUL, GLCSC, UNHCR, IOM. UNHCR Nigeria Displacement Dashboard June 2016

The designations employed and the presentation of material in the map(s) do not imply the expression of any opinion on the part of WFP concerning the legal or constitutional status of any country, territory, city or sea, or concerning the delimitation of its frontiers or boundaries.
 © World Food Programme 2016

2016 PROJECT RESOURCES: COMMON SERVICES

Special Operation 200834 (UNHAS NIGERIA)	Special Operation 200792* (UNHAS NIGER)
61%	79%
2016 Received: \$6m	2016 Required: \$10m
2016 Received: \$7m	2016 Required: \$8m
Special Operation 200895* (UNHAS CAMEROON)	Special Operation 200785* (UNHAS CHAD)
71%	65%
2016 Received: \$3m	2016 Required: \$4m
2016 Received: \$12m	2016 Required: \$18m

IDP CAMPS IN MAIDUGURI AREA



OPERATIONAL CHALLENGES

Insecurity	Humanitarian Access	Resources
Economic Volatility	Limited Partners	

WFP LEVEL 3 EMERGENCY

SINCE 11 AUGUST 2016

Check the **SITUATION REPORT**

<http://www.wfp.org/countries/nigeria>

2A REGIONAL EMOP 200777

<http://documents.wfp.org/stellent/groups/public/documents/ep/WFP284303.pdf>

Produced by the WFP **Operations Centre (OPSCEN)** jointly with Country Office and Regional Bureau Dakar

This dashboard is based on best available information at the time of production. Future updates may vary as new information becomes available.