



World Food Programme



# WFP Nigeria Situation Report #5

December 2016

## In Numbers

**1.8 m** people displaced, of which 1.3 million in Borno and 0.13 million in Yobe States

*(IOM Displacement Tracking Matrix, December 2016)*

**4.4 m** people food insecure in Borno and Yobe States

*(Phases 3, 4 & 5 Cadre Harmonisé, October 2016)*

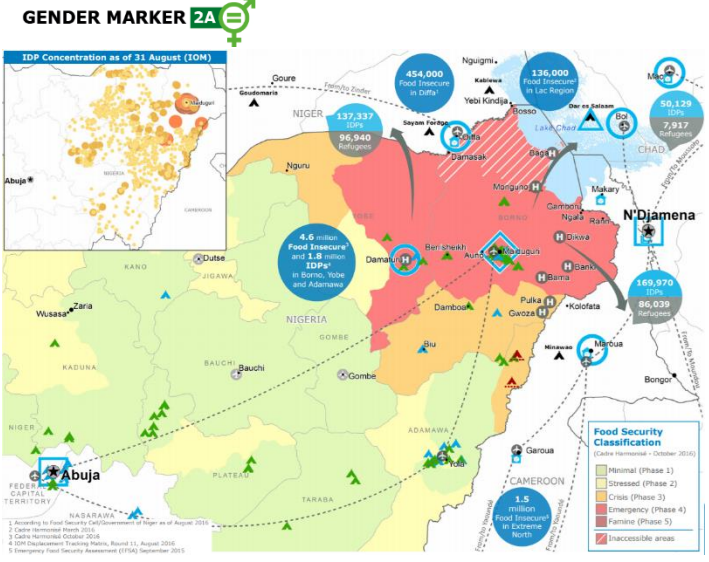
## Highlights

- In December 2016 WFP has assisted through cash-based transfers, in-kind food assistance and specialized nutritious food distributions more than a million Nigerians in conflict-affected zones in the Northeast of the country.
- In 2017 WFP aims to scale-up further to assist as many as 2 million people by the end of 2017, expanding to new areas.
- WFP needs a total needs a total of US\$208 million for its humanitarian response in Northeast Nigeria over the next six months (January-June 2017), of which US\$181 million has yet to be found.

## People assisted as of 31 December 2016

- ➔ Cash Based Transfers: **171,300**
- ➔ Supplementary Nutritious Food: **192,300**
- ➔ Food Distributions: **796,200**

*Figures are not to be added to avoid double counting.*



## Situation Update

- The crisis induced by the Boko haram insurgency remains the main driving factor of instability in north-east Nigeria and has the potential to cause further displacements and increase food insecurity.
- A [FEWS NET report](#) issued on 13 December estimates that in 2016 famine likely occurred in Bama and Banki towns in Bama LGA (Borno State) and may be ongoing in inaccessible areas. However the report, approved by IPC's Emergency Review Committee, notes that assistance since July has contributed to a reduction in levels of mortality and malnutrition, and has improved conditions in accessible areas of Borno State, including preventing famine in many IDP concentrations.

- The IOM's December [Displacement Tracking Matrix](#) reports around 1.77 million internally displaced persons (IDPs) are in north-east Nigeria, 80 percent of which are located across Borno, Adamawa and Yobe States.

## WFP Plans for 2017

- WFP is implementing a **robust scale up and an integrated response** to meet the overwhelming needs in north-east Nigeria, targeting as many as 2 million people in Borno and Yobe States by December 2017.
- The **bulk of the expansion** will be done through in-kind assistance, expanding to new areas, whereas cash-based transfers (CBT) will continue where already operationalized. Prevention of malnutrition for children aged 6 to 59 months will remain integrated with cash/in-kind assistance, and will be extended to pregnant and nursing women.
- **Rapid Response Mechanisms (RRM) and teams** set up jointly with UNICEF will be part of the scale up in deep field areas where insecurity prevents regular access.
- Where population returns are possible, **livelihood support** interventions will be established to support early recovery and help reduce reliance on food assistance.

## WFP's scale up in December

- In view of the plans for 2017, WFP has already started increasing its assistance, **giving prominence to in-kind food distributions**.
- In December alone, WFP has provided assistance to over **1 million people** in Borno and Yobe States. In areas with functioning markets, more than 170,000 people were assisted with cash. Nearly 800,000 people – most of them internally displaced, in camps or in host communities – benefited from food distributions; and over 190,000 children under five were given specialized nutritious food.
- Through the RRM, which includes extensive use of helicopters and the pooling of logistics and telecommunications resources across the humanitarian

community, WFP has managed to reach areas that were previously inaccessible and deliver in-kind life-saving assistance to 220,000 beneficiaries and to assist 22,000 children (aged 6 to 59 months) with Plumpy'Sup.

- Partnerships have been essential to the operational scale-up. WFP has been partnering with a number of national and international NGOs and with the Nigerian Government to implement activities and achieve its mission. In order to expand food assistance to new areas and reach more beneficiaries in the coming months, WFP is exploring further partnerships with six new potential cooperating Non-Governmental Organisations (NGOs).
- In January 2017, distribution plans aim to further scale up assistance across Borno and Yobe States by reaching over 1.3 million beneficiaries with in-kind food assistance, through CBT and including children at risk of malnutrition. Over 18,000 mt of food are being procured. To allow timely assistance, fast-tracked registration process will be used.
- To support the scale up, a solid staffing structure is being put in place in key locations, comprising of both international and national staff.

### Cash-Based Transfers

- Access capacity related to cash transfer is improving, with more reliance on end to end processes, however liquidity challenges have impacted access to beneficiary populations.
- Assessment missions were conducted by CBT volunteers paired with Airtel staff in Gongulung and Zaberhari communities in Jere LGA intended to identify traders/merchants who will serve as fixed location agents, as it was agreed on the 15 November high-level meeting in Lagos between WFP, Airtel and Access Bank. Over 250 merchants/traders were identified in Maiduguri LGA.
- Plans are underway to introduce SCOPE, WFP's digital beneficiary and transfer management platform. It is a cloud-based solution used for beneficiary registration, intervention setup, distribution planning, entitlement transfers and distribution reporting. WFP corporate tool will be able to handle all cash-based interventions from end to end, it will allow to offer a more personalized assistance, it will also help curb fraud and enable CBT projects to change course as required.

### Resourcing

- Funding needs for Nigeria operations have increased in line with the on-going scale-up. WFP requires US\$181 million to continue providing life-saving assistance in north-eastern Nigeria for the next six months.

### Supply Chain

- Increased storage capacity amounting to 24,000 mt has been secured in Maiduguri, which will increase through additional 20 Mobile Storage Units (MSUs) in the main cities and at food distribution points thanks to partners.
- Transport availability for the scale-up of activities is being closely monitored, and a transport market assessment is planned for Damaturu and Maiduguri.
- As WFP continues to increase its operations in Nigeria, all efforts would be made to support the local economy through local purchases. However, this may not always be possible, and WFP will be looking into importing additional food to supplement local purchases.

## Sectors and Common Services

- The Cash Working Groups for the humanitarian community met in Maiduguri on 6 December and in Abuja on 8 December; the groups reviewed recommendations and terms of references of the CALP mission (Cash Learning Partnership) from Dakar that took place at the end of November.

### Food Security Sector

- The Food Security Sector (FSS) and its partners responded by scaling up food assistance dramatically. Food assistance to vulnerable populations grew from reaching 0.6 million people in August 2016, to 2.1 million people by December 2016 (350 percent increase in the past five months). Better inter-agency coordination and partnerships facilitated this growth.

### Logistics Sector

- A 1,500 m<sup>2</sup> storage facility has been made available to the humanitarian community in Maiduguri and it is being managed on behalf of the Logistics Sector by cooperating partner Première Urgence Internationale.

### Emergency Telecommunications (ET) Sector

- The ET Sector finalised the installation of a stand-by Communications Centre (COMCEN) at the International Humanitarian Partnership (IHP) camp in Maiduguri.
- The ET Sector is re-programming the radio equipment of UN agencies in Maiduguri, from analogue to Digital Mobile Radio, due to the latter's safety features and wider coverage.

### UN Humanitarian Air Service

- The Nigerian Government plans to close Abuja International Airport for six weeks starting 08 March 2017 for repairs. It is planned to divert Abuja-bound flights to Kaduna, an airport used primarily for domestic flights about 160 km to the north. UNHAS will be meeting with aviation industry figures to determine a plan.
- During December, UNHAS has transported 2,245 passengers from 51 organizations via the fixed-wing aircraft, and via helicopter to hard-to-access locations.

### WFP Nigeria Resourcing Situation

Project	Requirements in 2017	6-month net funding requirements*	Total Received in 2016
<b>EMOP 200777</b> (Jan 2015-Dec 2017)	USD 352 million	USD 181 million	USD 71 million
<b>SO 200834</b> (Aug 2015-Dec 2017)	USD 35 million	USD 21.7 million	USD 2.2 million
<b>SO 201032</b> (Nov 2016-Dec 2017)	USD 11.1 million	USD 6.3 million	USD 3.3 million

\* January - June 2017.

### Contacts

**Sory Ouane**, Country Director

**Mishisalla Beyene**, Information Management Officer  
[mishisalla.beyene@wfp.org](mailto:mishisalla.beyene@wfp.org)

**Chiara Argenti**, Information Management Officer  
[chiara.argenti@wfp.org](mailto:chiara.argenti@wfp.org)